

HEY CREATOR !

Please take the time to Rate & Review our product based on your experience.
Your Reviews help people learn about the product & for our brand to grow further.

The Reviews also help us understand customers Thoughts,
needs and requirements, We value your feedback.

SCAN & CHECK OUT MORE PRODUCTS TO ENJOY!



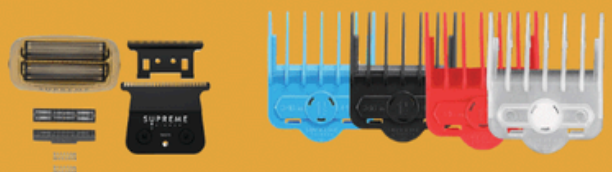
Clippers



Trimmers



Shavers

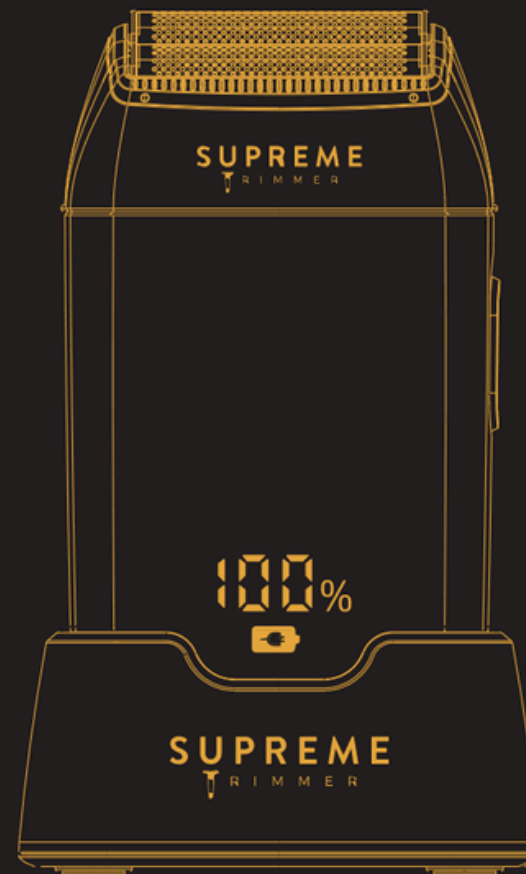


Replacements

For Additional Questions or comments
please email support@SupremeTrimmer.com

SUPREME[®]

TRIMMER



CRUNCH | MODEL NO.: STF602

USER GUIDE

GUÍA DEL USUARIO | BENUTZERHANDBUCH |
MANUAL DO UTILIZADOR |
MANUEL UTILISATEUR | KULLANICI REHBERİ

CONGRATULATIONS ON YOUR NEW TOOL!

**Our tools are customized from the Motor, Battery, Blade,
PCB & Color & Design.**

To ensure you get the most out of your new product,
please take a moment to read the included user manual for setup
instructions and maintenance tips.

We test each product and each tool is assembled by hand!

That's right,

Your tool is HAND MADE and tested before boxing in various ways!

If for any reason you are not Satisfied or something just isn't right,
PLEASE contact us and let our team guide you towards resolution.

We pride our tools, , customers and giving satisfaction.

Any product with Battery,

Motor or PCB issues are replaced Free of charge.

For Additional Questions or comments
please email support@SupremeTrimmer.com

Tag @SupremeTrimmer #SupremeTrimmer
while using your tool to Be Featured!

Follow Us On Social Media



@SUPREMETRIMMER

We hope this purchase enhances your life,
and we look forward to serving you again in the future.
Thank you for being a valued customer of Supreme Trimmer.

User Manual Warranty Card

PG 1-2: Product Overview

PG 3-5: Accessories / Functions

PG 6-7: Cleaning & Maintenance

PG 8-9: Charging & Troubleshooting

PG 10: Attention / Warning

PG 11: Information / Replacements

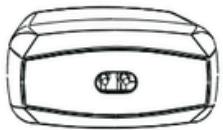
PG 12: Warranty & Customer Service

TECHNICAL PARAMETER

Input: DC 5V== 1000mAh (100-240V)	Power: 8W
Rated Voltage: 3.7V	Working Voltage: 3.2V
Charging Time: 2 Hours	Running Time: 2.5 Hours
Waterproof: IPX6	Plug and Play
Charging (High Voltage) Protection: >5V	
Discharge (Low Voltage) Electric Protection: 3.2V	

LCD Battery Display

- SP Pantalla LCD de batería
- DE LCD-Batterieanzeige
- PT Visor LCD de bateria
- FR Affichage de la batterie LCD
- TK LCD Pil Ekranı



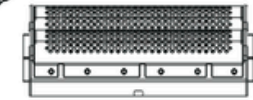
2 Prong charging port

- SP Puerto de carga de 2 clavijas
- DE 2-poliger Ladeanschluss
- PT Porta de carregamento de 2 pinos
- FR Port de chargement à 2 broches
- TK 2 uçlu şarj portu

1

Protective Cap

- SP Tapa protectora
- DE Schutzkappe
- PT Tampa protetora
- FR Capuchon de protection
- TK Koruyucu Kapak



Hypoallergenic Foils (SB63)

- SP Láminas hipoalergénicas (SB63)
- DE Hypoallergene Folien (SB63)
- PT Folhas hipoalergénicas (SB63)
- FR Feuilles hypoallergéniques (SB63)
- TK Hipoalerjenik Folyolar (SB63)

On / Off Switch

- SP Ein / Aus Schalter
- DE Ein / Aus Schalter
- PT Interruptor liga/desliga
- FR Bouton ON / OFF
- TK Interruptor encendido / apagado



2

ACCESSORIES / FUNCTIONS



Foil Guard Cap



Charging Stand



2*Chargers



3*Different Brushes



Premium Storage Bag



Wall Adapter USA ONLY

INTENDED USE:

For super close cuts on the Head or Face areas.
Not meant for Neck shaving or sensitive areas as it may cause irritation.
Crunch STF602 Foil Shaver is IPX6; can be used Wet or Dry. Shave using shaving cream or lather.

USO PREVISTO

Para cortes súper al ras en las áreas de la cabeza o la cara.
No está indicado para afeitarse el cuello ni zonas sensibles, ya que puede causar irritación.
La afeitadora de láminas Crunch STF602 es IPX6; Puede usarse mojado o seco.
Afeitate con crema de afeitar o espuma.

VERWENDUNGSZWECK:

Für supernahe Schnitte im Kopf- oder Gesichtsbereich.
Nicht für die Rasur am Hals oder an empfindlichen Stellen geeignet, da es zu Reizungen kommen kann.
Crunch STF602 Folienrasierer ist IPX6; kann nass oder trocken verwendet werden.
Rasieren Sie sich mit Rasierschaum oder Rasierschaum.

USO PRETENDIDO:

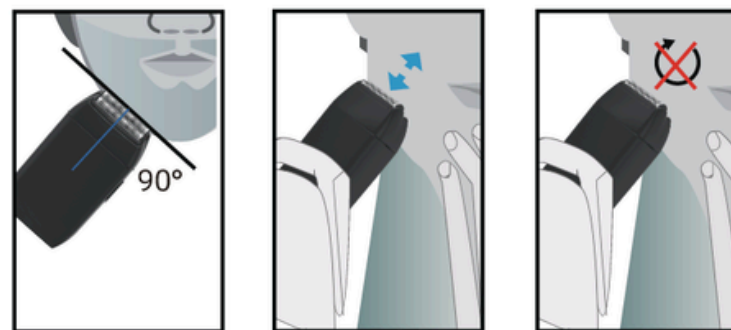
Para cortes super próximos nas áreas da cabeça ou do rosto.
Não se destina a barbear o pescoço ou áreas sensíveis, pois pode causar irritação.
O barbeador Crunch STF602 é IPX6; Pode ser usado molhado ou seco.
Faça a barba com creme ou espuma de barbear.

FR UTILISATION PRÉVUE :

Pour des coupes très rapprochées sur les zones de la tête ou du visage.
Non destiné au rasage du cou ou des zones sensibles car cela peut provoquer une irritation.
Le rasoir à grille Crunch STF602 est IPX6 ; peut être utilisé humide ou sec.
Rasez-vous avec de la crème à raser ou de la mousse.

TK UTILISATION PRÉVUE

Pour des coupes très rapprochées sur les zones de la tête ou du visage.
Non destiné au rasage du cou ou des zones sensibles car cela peut provoquer une irritation.
Le rasoir à grille Crunch STF602 est IPX6 ; peut être utilisé humide ou sec.
Rasez-vous avec de la crème à raser ou de la mousse.



1. Remove the protective cap before use. Make sure outer foils and inner cutters are NOT damaged before use. Replace damaged parts before using.
2. Position the shaver at a 90 degree angle to your skin.
3. Gently stretch your skin with your other hand to make the stubble stand out and provide an easier shave.
4. Use up and down motions to shave. Circular motions can cause skin irritation.
5. Make sure you dust off any hair before storing the shaver.

- SP Retire la tapa protectora antes de usar. Asegúrese de que las láminas exteriores y Los cortadores internos NO se dañan antes de su uso. Reemplazar las piezas dañadas antes de usar.
2. Coloque la afeitadora en un ángulo de 90 grados con respecto a su piel.
 3. Estire suavemente la piel con la otra mano para formar la barba. destacan y proporcionan un afeitado más fácil.
 4. Utilice movimientos hacia arriba y hacia abajo para afeitarse. Los movimientos circulares pueden causar irritación de la piel.
 5. Asegúrese de quitar el polvo del pelo antes de guardar la afeitadora.

- DE**
1. Vor Gebrauch die Schutzkappe entfernen. Stellen Sie sicher, dass Außenfolien und Innenschneider werden vor dem Gebrauch NICHT beschädigt. Beschädigte Teile ersetzen vor Gebrauch.
 2. Positionieren Sie den Rasierer im 90-Grad-Winkel zu Ihrer Haut.
 3. Dehnen Sie Ihre Haut vorsichtig mit der anderen Hand, um die Stoppeln zu bilden stechen hervor und sorgen für eine einfachere Rasur.
 4. Verwenden Sie zum Rasieren Auf- und Abbewegungen. Kreisbewegungen können dazu führen Hautreizungen.
 5. Stellen Sie sicher, dass Sie alle Haare entstauben, bevor Sie den Rasierer aufbewahren.

- PT**
1. Remova a tampa protetora antes de usar. Certifique-se de que as películas externas e os cortadores internos NÃO são danificados antes do uso. Substituir peças danificadas antes de usar.
 2. Posicione o barbeador em um ângulo de 90 graus em relação à pele.
 3. Estique suavemente a pele com a outra mão para fazer a barba por fazer destacam-se e proporcionam um barbear mais fácil.
 4. Use movimentos para cima e para baixo para fazer a barba. Movimentos circulares podem causar Irritação na pele.
 5. Certifique-se de tirar o pó de qualquer cabelo antes de guardar o barbeador.

- FR**
1. Retirez le capuchon de protection avant utilisation. Assurez-vous que les feuilles extérieures et les couteaux intérieurs ne sont PAS endommagés avant utilisation. Remplacer les pièces endommagées avant d'utiliser.
 2. Positionnez le rasoir à un angle de 90 degrés par rapport à votre peau.
 3. Étirez doucement votre peau avec votre autre main pour faire le chaume démarquez-vous et offrez un rasage plus facile.
 4. Utilisez des mouvements de haut en bas pour vous raser. Les mouvements circulaires peuvent provoquer irritation de la peau.
 5. Assurez-vous de dépoussiérer tous les poils avant de ranger le rasoir.

- TK**
1. Kullanmadan önce koruyucu kapağı çıkarın. Dış folyoların ve iç kesiciler kullanımdan önce hasar görmez. Hasarlı parçaları değiştir kullanmadan önce.
 2. Tıraş makinesini cildinize 90 derecelik bir açıyla konumlandırın.
 3. Kirli sakalı oluşturmak için diğer elinizle cildinizi yavaşça gerin. öne çıkar ve daha kolay bir tıraş sağlar.
 4. Tıraş olmak için yukarı ve aşağı hareketleri kullanın. Dairesel hareketler neden olabilir cilt tahrişi.
 5. Tıraş makinesini saklamadan önce saçlarınızın tozunu aldığınızdan emin olun.

CLEANING AND MAINTENANCE



Crunch Foil Shaver can be cleaned with water or the included brushes. When cleaning with WATER; turn the shaver on and hold foils/blades under water until all residue has been removed. Let dry & then apply 1-2 drops of oil on the blades to prevent corrosion. When cleaning with BRUSHES; turn shaver OFF, remove the foil shell and clean the blades. Dust off any hair in the foil shell. It's not recommended to stick the brush through the foil holes as you can damage the foils. Apply 1-2 drops of oil on the blades. Regular cleaning is necessary to maintain the optimal performance and maximum comfort from your shaver.

SP Crunch Foil Shaver se puede limpiar con agua o con los cepillos incluidos. Al limpiar con AGUA; Encienda la afeitadora y mantenga las láminas/cuchillas bajo el agua hasta que se hayan eliminado todos los residuos. Deje secar y luego aplique 1-2 gotas de aceite en las cuchillas para evitar la corrosión. Al limpiar con CEPILLOS; Apague la afeitadora, retire la cubierta de aluminio y limpie las cuchillas. Quita el polvo de cualquier pelo que quede en la cubierta de aluminio. No se recomienda pasar el cepillo a través de los agujeros de las láminas, ya que puedes dañarlas. Aplicar 1-2 gotas de aceite en las cuchillas. Es necesaria una limpieza regular para mantener el rendimiento óptimo y la máxima comodidad de su afeitadora.

DE Der Crunch Folienrasierer kann mit Wasser oder den mitgelieferten Bürsten gereinigt werden. Beim Reinigen mit WASSER; Schalten Sie den Rasierer ein und halten Sie Folien/Klingen fest unter Wasser, bis alle Rückstände entfernt sind. Trocknen lassen und dann auftragen 1-2 Tropfen Öl auf die Klingen geben, um Korrosion vorzubeugen.

Beim Reinigen mit BÜRSTEN; Schalten Sie den Rasierer aus, entfernen Sie die Folienhülle und reinigen Sie die Klingen. Entfernen Sie alle Haare in der Folienhülle. Es wird nicht empfohlen, die Bürste durch die Folienlöcher zu stecken, da dies die Folien beschädigen kann. Tragen Sie 1-2 Tropfen Öl auf die Klingen auf. Um die optimale Leistung und maximalen Komfort Ihres Rasierers zu gewährleisten, ist eine regelmäßige Reinigung erforderlich.

PT O Crunch Foil Shaver pode ser limpo com água ou com os pincéis incluídos. Ao limpar com ÁGUA; ligue o barbeador e segure as lâminas/lâminas debaixo de água até que todos os resíduos tenham sido removidos. Deixe secar e depois aplique 1-2 gotas de óleo nas lâminas para evitar corrosão. Ao limpar com ESCOVAS; DESLIGUE o barbeador, remova o invólucro de alumínio e limpe as lâminas. Tire o pó de qualquer cabelo da casca de papel alumínio. Não é recomendado enfiar o pincel nos orifícios da folha, pois você pode danificá-la. Aplique 1-2 gotas de óleo nas lâminas. A limpeza regular é necessária para manter o desempenho ideal e o máximo conforto do seu barbeador.

FR Le rasoir à grille Crunch peut être nettoyé avec de l'eau ou avec les brosses fournies. Lors du nettoyage à l'EAU ; allumez le rasoir et maintenez les grilles/lames sous l'eau jusqu'à ce que tous les résidus aient été éliminés. Laissez sécher puis appliquez 1 à 2 gouttes d'huile sur les lames pour éviter la corrosion.

Lors du nettoyage avec des BROSSES ; éteignez le rasoir, retirez la coque en aluminium et nettoyez les lames. Dépoussiérez les poils présents dans la coque en aluminium. Il n'est pas recommandé de coller le pinceau à travers les trous du film car vous pourriez endommager les films. Appliquez 1 à 2 gouttes d'huile sur les lames. Un nettoyage régulier est nécessaire pour maintenir les performances optimales et le confort maximum de votre rasoir.

TK Crunch Folyo Tıraş Makinesi su veya birlikte verilen fırçalarla temizlenebilir. SU ile temizlik yaparken; tıraş makinesini açın ve tüm kalıntılar giderilene kadar folyoları/bıçakları suyun altında tutun. Kurumasını bekleyin ve ardından korozyonu önlemek için bıçakların üzerine 1-2 damla yağ uygulayın. FIRÇALAR ile temizlik yaparken; Tıraş makinesini KAPATIN, folyo kabuğunu çıkarın ve bıçakları temizleyin. Folyo kabuğundaki tüylerin tozunu alın. Folyolara zarar verebileceğinizden fırçayı folyo deliklerinden geçirmeniz önerilmez. Bıçakların üzerine 1-2 damla yağ damlatın. Tıraş makinenizden optimum performansı ve maksimum konforu korumak için düzenli temizlik gereklidir.

CHARGING & TROUBLESHOOTING



Power Display:

When the device is powered on, the Digital Display shows the remaining battery power (%)



Charge Indicator:

If the indicator flashes, you need to charge the device, when charging, the indicator light up in red, when full charged, it extinguished.

Once you receive the shaver, please charge it to 100% before use. A full charge provides up to 150 minutes of use. The shaver can be used corded or cordless & has a 10-minute quick charge sufficient for a single shave. 100-240V Universal Charge by cord or charging stand.

After cleaning, make sure the blades are inserted all the way without breaking the hooks. If you hear a rattling noise when the shaver is on, your blades are loose and need tightening. Check that no blades are bent or dented. Do not use thinner or benzine to clean the blades or foils. Experience any issues? Contact customer service (PG 12)

SP Pantalla de energía:

Cuando el dispositivo está encendido, el Digital La pantalla muestra la energía restante de la batería (%)

Indicador de carga:

Si el indicador parpadea, es necesario cargar el Dispositivo, durante la carga, el indicador se ilumina. En rojo, cuando estaba completamente cargado, se extinguió.

Una vez que reciba la afeitadora, cárguela al 100% antes de usarla. Una carga completa proporciona hasta 150 minutos de uso. La afeitadora se puede usar con o sin cable y tiene una carga rápida de 10 minutos suficiente para un solo afeitado. Carga universal de 100-240 V mediante cable o soporte de carga. Después de la limpieza, asegúrese de que las cuchillas estén insertadas completamente sin romper los ganchos. Si escuchas un ruido metálico cuando la afeitadora está encendida, las cuchillas están flojas y es necesario apretarlas. Compruebe que ninguna hoja esté doblada o abollada. No utilice diluyente ni bencina para limpiar las cuchillas o las láminas. ¿Tiene algún problema? Contactar con atención al cliente (PG 12)

DE Leistungsanzeige:

Wenn das Gerät eingeschaltet ist, leuchtet die Digital Das Display zeigt die verbleibende Batterieleistung (%) an.

Ladeanzeige:

Wenn die Anzeige blinkt, müssen Sie das Gerät aufladen. Gerät, während des Ladevorgangs leuchtet die Anzeige auf. Inrot, wenn es voll aufgeladen war, erlosch es.

Sobald Sie den Rasierer erhalten haben, laden Sie ihn bitte vor der Verwendung zu 100 % auf. Eine vollständige Aufladung ermöglicht eine Nutzungsdauer von bis zu 150 Minuten. Der Rasierer kann mit oder ohne Kabel verwendet werden und verfügt über eine 10-minütige Schnellladung, die für eine einzelne Rasur ausreicht. 100–240 V, universell, Aufladung per Kabel oder Ladestation. Stellen Sie nach der Reinigung sicher, dass die Klingen vollständig eingeführt sind, ohne dass die Haken brechen. Wenn Sie bei eingeschaltetem Rasierer ein klapperndes Geräusch hören, sind Ihre Klingen locker und müssen festgezogen werden. Stellen Sie sicher, dass die Klingen nicht verbogen oder verbeult sind. Verwenden Sie zum Reinigen der Klingen oder Folien keinen Verdünner oder Benzin. Treten irgendwelche Probleme auf? Kontaktieren Sie den Kundendienst (PG 12)

PT Exibição de energia:

Quando o dispositivo é ligado, o Digital O display mostra a carga restante da bateria (%)

Indicador de carga:

Se o indicador piscar, você precisa carregar o dispositivo, ao carregar, o indicador acende Inred, quando totalmente carregado, extinguiu-se.

Depois de receber o barbeador, carregue-o 100% antes de usar. Uma carga completa fornece até 150 minutos de uso. O barbeador pode ser usado com ou sem fio e tem uma carga rápida de 10 minutos, suficiente para um único barbear. Carga universal 100-240V por cabo ou suporte de carregamento. Após a limpeza, certifique-se de que as lâminas estejam totalmente inseridas sem quebrar os ganchos. Se você ouvir um barulho quando o barbeador estiver ligado, suas lâminas estão soltas e precisam ser apertadas. Verifique se nenhuma lâmina está dobrada ou amassada. Não use diluente ou benzina para limpar as lâminas ou folhas. Teve algum problema? Entre em contato com o atendimento ao cliente (PG 12)

FR Affichage de la puissance :

Lorsque l'appareil est allumé, le Digital L'écran affiche la puissance restante de la batterie (%)

Témoin de charge:

Si le voyant clignote, vous devez charger le Appareil, lors du chargement, le voyant s'allume inred, une fois complètement chargé, il s'éteint.

Une fois que vous recevez le rasoir, veuillez le charger à 100 % avant utilisation. Une charge complète offre jusqu'à 150 minutes d'utilisation. Le rasoir peut être utilisé avec ou sans fil et dispose d'une charge rapide de 10 minutes suffisante pour un seul rasage. Charge universelle 100-240 V par cordon ou support de charge.

Après le nettoyage, assurez-vous que les lames sont insérées jusqu'au bout sans casser les crochets. Si vous entendez un bruit de cliquetis lorsque le rasoir est allumé, vos lames sont desserrées et doivent être resserrées. Vérifiez qu'aucune lame n'est pliée ou bosselée. N'utilisez pas de diluant ou d'essence pour nettoyer les lames ou les feuilles. Vous rencontrez des problèmes ? Contacter le service client (PG 12)

TK Güç Göstergesi:

Cihaz açıldığında Dijital Ekranda kalan pil gücü (%) gösterilir

Şarj göstergesi:

Gösterge yanıp söniyorsa şarj etmeniz gerekir cihaz şarj olurken gösterge yanıyor inred, tam şarj olduğunda söndü.

Tıraş makinesini aldıktan sonra lütfen kullanmadan önce %100 şarj edin. Tam şarj 150 dakikaya kadar kullanım sağlar. Tıraş makinesi kablolu veya kablosuz olarak kullanılabilir ve tek bir tıraş için yeterli olan 10 dakikalık hızlı şarja sahiptir. 100-240V Evrensel Kabloyla veya şarj standıyla şarj edin. Temizledikten sonra bıçakların kancaları kırmadan sonuna kadar t akıldığından emin olun. Tıraş makinesi açıkken bir tıkırtı sesi duyarsanız bıçaklarınız gevşek demektir ve sıkılması gerekiyor demektir. Hiçbir bıçağın eğilip bükülmediğini kontrol edin. Bıçakları veya folyoları temizlemek için tiner veya benzin kullanmayın. Herhangi bir sorun yaşadınız mı? Müşteri hizmetlerine başvurun (PG 12)



ATTENTION / WARNING



- 1.KEEP AWAY FROM CHILDREN. This is NOT a toy!
 - 2.Do NOT use if blades are BROKEN.
- For any questions or concerns, please contact customer service (PG 12)
Worldwide Suppliers is NOT responsible for injuries due to mishandling.

- SP 1. MANTENER ALEJADO DE LOS NIÑOS. ¡Esto no es un juguete!
2. NO lo use si las cuchillas están ROTAS.
Para cualquier pregunta o inquietud, comuníquese con el servicio de atención al cliente (PG 12)
Worldwide Suppliers NO es responsable de las lesiones debidas a un mal manejo.

- DE 1. VON KINDERN FERNHALTEN. Dies ist KEIN Spielzeug!
2. NICHT verwenden, wenn die Klingen ZERBROCHEN sind.
Bei Fragen oder Bedenken wenden Sie sich bitte an den Kundendienst (PG 12).
Worldwide Supplier ist NICHT verantwortlich für Verletzungen, die durch unsachgemäße Handhabung entstehen.

- PT 1. MANTENHA LONGE DAS CRIANÇAS. Isso não é um brinquedo!
2. NÃO use se as lâminas estiverem QUEBRADAS.
Para qualquer dúvida ou preocupação, entre em contato com o atendimento ao cliente (PG 12)
Os fornecedores mundiais NÃO são responsáveis por ferimentos devido ao manuseio incorreto.

- FR 1. GARDER LOIN DES ENFANTS. Ce n'est pas un jouet!
2. Ne pas utiliser si les lames sont cassées.
Pour toute question ou préoccupation, veuillez contacter le service client (PG 12)
Les fournisseurs mondiaux ne sont PAS responsables des blessures dues à une mauvaise manipulation.

- TK 1. ÇOCUKLARDAN UZAK TUTUN. Bu bir oyuncak DEĞİLDİR!
2. Bıçaklar KIRIK ise KULLANMAYIN.
Sorularınız veya endişeleriniz için lütfen müşteri hizmetleriyle iletişime geçin (PG 12)
Yanlış kullanımdan kaynaklanan yaralanmalardan Dünya Çapındaki Tedarikçiler sorumlu DEĞİLDİR.

FOR MORE INFORMATION

For more information on CRUNCH Foil Shaver, Scan QR Code below:

- SP Para obtener más información sobre CRUNCH Foil Shaver, escanee el código QR a continuación:
- DE Für weitere Informationen zum CRUNCH Folienrasierer scannen Sie den folgenden QR-Code:
- PT Para obter mais informações sobre o CRUNCH Foil Shaver, leia o código QR abaixo:
- FR Pour plus d'informations sur le rasoir à grille CRUNCH, scannez le code QR ci-dessous :
- TK CRUNCH Folyo Tıraş Makinesi hakkında daha fazla bilgi için aşağıdaki QR Kodunu Tarayın:



SCAN FOR MORE
INFORMATION

For replacement Foils & Blades; Scan QR Codes below:

- SP Para láminas y cuchillas de repuesto; Escanee los códigos QR a continuación:
- DE Für Ersatzfolien und -klingen; Scannen Sie die folgenden QR-Codes:
- PT Para folhas e lâminas de reposição; Digitalize os códigos QR abaixo:
- FR Pour les feuilles et les lames de remplacement ; Scannez les codes QR ci-dessous :
- TK Yedek Folyolar ve Bıçaklar için; Aşağıdaki QR Kodlarını tarayın:



Scan for Replacement
Foils/Blades

WARRANTY INFORMATION

12 MONTH LIMITED WARRANTY AGAINST DEFECTS OR LACK OF CRAFTSMANSHIP.

Our product carries warranty against defective material of workmanship for 1 full year from the date of purchase. Any product determined to be defective in material or workmanship during the warranty period will be repaired or replaced without the cost of parts or labor to consumer.

CUSTOMER SERVICE

Please reach out to our Customer Service team for any Questions or Concerns regarding your CRUNCH Foil Shaver We are here to assist on all matters and take great pride in taking care of our customers.



Scan QR code to Submit a " Contact Me" Form

Call, Text OR Email: M-F 8 AM-3 PM PST
Email: support@supremetrimmer.com
Phone: +1 (818) 626-8065 (USA)
Website: WWW.SUPREMETRIMMER.COM

HEY CREATOR !

Please take the time to Rate & Review our product based on your experience.
Your Reviews help people learn about the product & for our brand to grow further.

The Reviews also help us understand customers Thoughts,
needs and requirements, We value your feedback.

SCAN & CHECK OUT MORE PRODUCTS TO ENJOY!



Clippers



Trimmers



Shavers



Replacements

For Additional Questions or comments
please email support@SupremeTrimmer.com

SUPREME[®]

T R I M M E R



T-SHAPER MODEL: ST5205, ST5206

USER GUIDE

GUÍA DEL USUARIO | BENUTZERHANDBUCH |
MANUAL DO UTILIZADOR |
MANUEL UTILISATEUR | KULLANICI REHBERI

CONGRATULATIONS ON YOUR NEW TOOL!

**Our tools are customized from the Motor, Battery, Blade,
PCB & Color & Design.**

To ensure you get the most out of your new product,
please take a moment to read the included user manual for setup
instructions and maintenance tips.

We test each product and each tool is assembled by hand!

That's right,

Your tool is HAND MADE and tested before boxing in various ways!

If for any reason you are not Satisfied or something just isn't right,
PLEASE contact us and let our team guide you towards resolution.

We pride our tools, , customers and giving satisfaction.

Any product with Battery,

Motor or PCB issues are replaced Free of charge.

For Additional Questions or comments
please email support@SupremeTrimmer.com

Tag @SupremeTrimmer #SupremeTrimmer
while using your tool to Be Featured!

Follow Us On Social Media



@SUPREMETRIMMER

We hope this purchase enhances your life,
and we look forward to serving you again in the future.
Thank you for being a valued customer of Supreme Trimmer.

WARNING:



Always Keep the Trimmer dry. DO NOT use in bath
or shower.

- ▶ This Trimmer is not intended for use by persons (including children) with reduced physical, sensory or mental capabilities, or lack of experience or any knowledge, unless they have been given supervision or instruction concerning use of the appliance by a person responsible for their safety.
- ▶ Children should be supervised to ensure that they do not play with the Trimmer.
- ▶ To prevent possible harm to the environment or human health from uncontrolled waste disposal, such as the unused batteries and motors etc. Recycle them responsibly to promote the sustainable reuse of material resources.
- ▶ To return your used device, please use the return and collection systems or contact the retailer where the product was purchased. They can take this product for environmentally safe recycling.

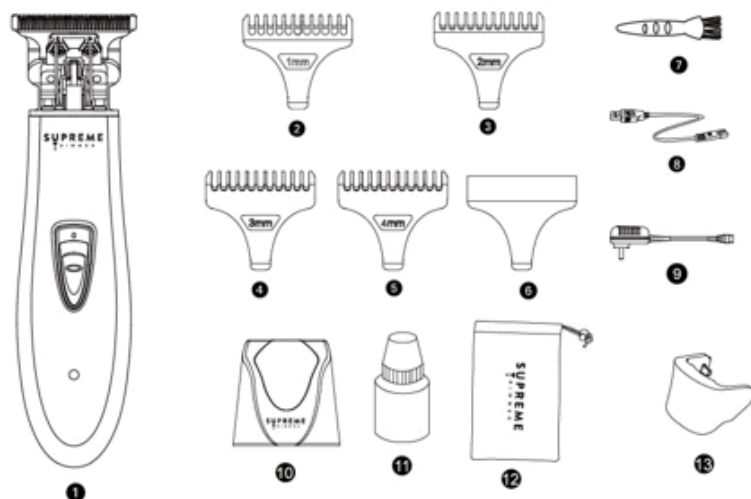
CAUTIONS:

- ▶ Clean the Device using only a cloth slightly dampened with water or a mild soap solution. Never use a caustic solution.
- ▶ Never submerge the Device in water.
- ▶ Keep away from children.
- ▶ When using, do not hold the power soft line, to prevent possible harm and to avoid accidents.
- ▶ Never tamper with moving or loose parts.
- ▶ Make sure to charge at least one time within one year after purchase.

CHARGING:

- ▶ Before using for first time, please charge 90 Min. to activate the rechargeable batteries.
- ▶ DO NOT charge if the temperature is lower than 0°C or higher than 40°C.
- ▶ DO NOT charge if it is near the sunlight perpendicular incidence or if the heat source radiates.
- ▶ When fully charged, Device can be used for Approx. 90 minutes. During charging, the indicator light shows red.
- ▶ Push the switch button to ON, then it can be used.

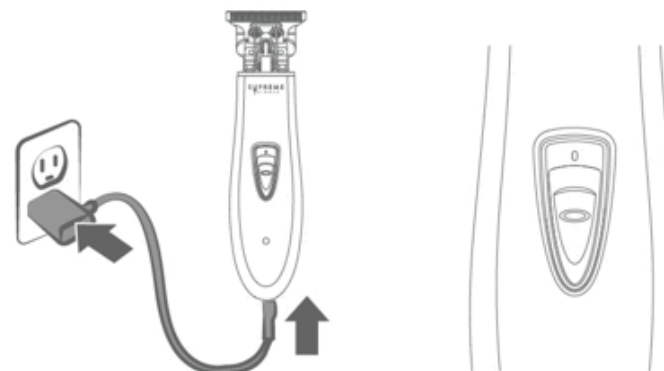
Parts Identification:



- | | |
|--------------------------|--------------------------|
| ① T-Shaper Men's Trimmer | ② Guided Combs (1mm) |
| ③ Guided Combs (2mm) | ④ Guided Combs (3mm) |
| ⑤ Guided Combs (4mm) | ⑥ Red Blade Cover |
| ⑦ Cleaning Brush | ⑦ USB Charger |
| ⑧ Wall Charger | ⑧ Wireless Charger Stand |
| ⑨ Oil for Blade's | ⑨ Travel Bag |
| ⑩ Hair Cover | |

How to use T-Shaper:

- ★ Our Trimmer can be used corded and cordless.
- ★ Put the Charger adaptor with the jack of the battery pack which lies at the bottom of the Device, then put the adaptor pins connected with power to successfully Charge.



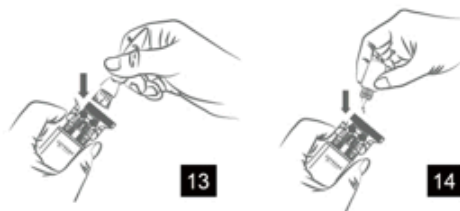
Comb Attachment Use:

1. Please ensure the power switch is at OFF position. Proceed to Attach combs 1, 2, 3, 4 mm for different cutting length (picture 11)
2. Push the comb From Handle, (picture 12), you can change the comb with other size's.



Maintenance of the blades:

Blade Model: DLC TBD52



- ★ Use the brush to clean the blade to remove hair which may be caught between the blades. Lubricate the space between the stationary and moving blades with 2 or 4 drops of oil after a few uses.



Buy T Shaper Blades

Cleaning under the tap:

Clean the cutting element and comb under a warm tap after every use (Fig. 15).



4

ONE YEAR WARRANTY

Supreme Trimmer provides Warranty for this new product (except foils, Cutters, Blades & Guards) against product defect for 1 year from purchase date. We agree to replace any defective product without charge. We do not cover damage resulting from Accident, Misuse, Drops, or lack of reasonable care.



Customer Service / Contact us

CUSTOMER SERVICE (UNLIMITED)

Phone: +1 (818) 626-8065

Website: www.SupremeTrimmer.com

Email: Support@supremetrimmer.com

TECHNICAL SPECS:

- LED Battery Indicator
- 120 Minutes of Continued use (800mA Lithium-ion Battery)
- 7000 Rpm Motor
- Stainless Steel Blade (Model # DLC TBD52)
- Ergonomic / Skeleton / Easy to use
- Lightweight Design
- Cord / Cordless
- 100-240V Worldwide Voltage



5

HEY CREATOR !

Please take the time to Rate & Review our product based on your experience.
Your Reviews help people learn about the product & for our brand to grow further.

The Reviews also help us understand customers Thoughts,
needs and requirements, We value your feedback.

SCAN & CHECK OUT MORE PRODUCTS TO ENJOY!



Clippers



Trimmers



Shavers



Replacements

For Additional Questions or comments
please email support@SupremeTrimmer.com

SUPREME[®]

TRIMMER



PRO CLIPPER LITE | MODEL NO.: STC5000

USER GUIDE

GUÍA DEL USUARIO | BENUTZERHANDBUCH |
MANUAL DO UTILIZADOR |
MANUEL UTILISATEUR | KULLANICI REHBERI

CONGRATULATIONS ON YOUR NEW TOOL!

**Our tools are customized from the Motor, Battery, Blade,
PCB & Color & Design.**

To ensure you get the most out of your new product,
please take a moment to read the included user manual for setup
instructions and maintenance tips.

We test each product and each tool is assembled by hand!

That's right,

Your tool is HAND MADE and tested before boxing in various ways!

If for any reason you are not Satisfied or something just isn't right,
PLEASE contact us and let our team guide you towards resolution.

We pride our tools, , customers and giving satisfaction.

Any product with Battery,

Motor or PCB issues are replaced Free of charge.

For Additional Questions or comments
please email support@SupremeTrimmer.com

Tag [@SupremeTrimmer](#) #SupremeTrimmer
while using your tool to Be Featured!

Follow Us On Social Media



@SUPREMETRIMMER

We hope this purchase enhances your life,
and we look forward to serving you again in the future.
Thank you for being a valued customer of Supreme Trimmer.

User Manual Warranty Card

PG 1-2: Product Overview

PG 3-4: Accessories / Functions

PG 5: Lever, Guide Combs & Replacements

PG 6-7: Ceramic Taper or Steel Fade Blade

PG 8-10: Charging & Attention / Warning

PG 11: Information / Replacements

PG 12: Warranty & Customer Service

TECHNICAL PARAMETER

Input: DC5V 2000mAh(100-240V)

Rated Voltage: 3.7V

Working Voltage: 3.2V

Charging Time: 4 Hours

Working Time: 3.5 Hours

Motor Speed: 6000-6500 RPM

Power: 8W

On/Off Switch

- SP Interruptor encendido / apagado
- DE Ein / Aus Schalter
- PT Interruptor liga/desliga
- FR Bouton ON / OFF
- TK Açma / kapama düğmesi



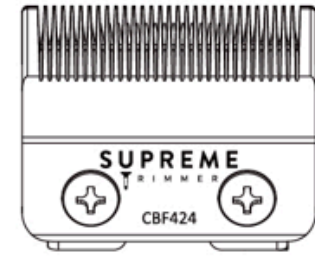
Non Click Lever

- SP Palanca sin clic
- DE Nicht-Klick-Hebel
- PT Alavanca sem cliques
- FR Levier sans clic
- TK Tıklamasız Køl

Charging Port

- SP Puerto de carga
- DE Aufladestation
- PT Porto de carregamento
- FR Port de chargement
- TK Şarj bağlantı noktası

1



Black Titanium Stainless Steel Fade Blade (CBF424)

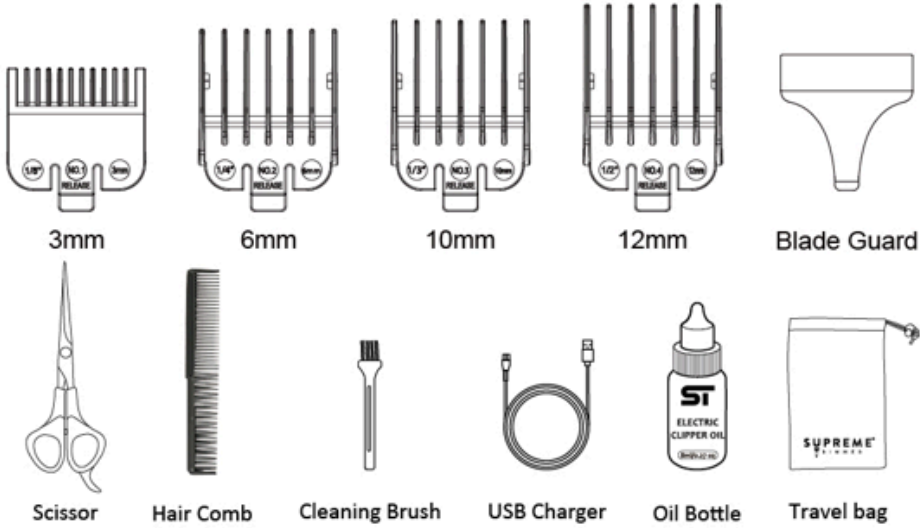
- SP Hoja de acero inoxidable con acabado en titanio negro (CBF424)
- DE Schwarze Titan-Edelstahl Klinge mit verblasstem Farbverlauf (CBF424)
- PT Lâmina de aço inoxidável de titânio preto Fade (CBF424)
- FR Lame en acier inoxydable noir et titane (CBF424)
- TK Siyah Titanyum Paslanmaz Çelik Solma Bıçak (CBF424)

Smart Digital Display

- SP Pantalla digital inteligente
- DE Intelligente Digitalanzeige
- PT Visor digital inteligente
- FR Affichage numérique intelligent
- TK Akıllı Dijital Ekran

2

ACCESSORIES / FUNCTIONS



Experience an impressive 210 minutes of high-performance cordless use with STC5000 Pro Clipper Lite. Operating at an impressive 6000 RPM; it effortlessly caters to all hair types and ensures versatile & efficient grooming.

- SP** Disfrute de 210 minutos de uso sin cables de alto rendimiento con la cortadora STC5000 Pro Clipper Lite. Con una velocidad impresionante de 6000 RPM, se adapta sin esfuerzo a todo tipo de cabello y garantiza un cuidado versátil y eficiente.
- DE** Erleben Sie beeindruckende 210 Minuten kabellosen Hochleistungseinsatz mit dem STC5000 Pro Clipper Lite. Mit beeindruckenden 6000 U/min eignet er sich mühelos für alle Haartypen und sorgt für eine vielseitige und effiziente Pflege.
- PT** Experimente impressionantes 210 minutos de uso sem fio de alto desempenho com o STC5000 Pro Clipper Lite. Operando a impressionantes 6000 RPM; ele atende facilmente a todos os tipos de cabelo e garante uma preparação versátil e eficiente.
- FR** Bénéficiez d'une impressionnante autonomie de 210 minutes d'utilisation sans fil hautes performances avec la tondeuse STC5000 Pro Clipper Lite. Fonctionnant à une vitesse impressionnante de 6 000 tr/min, elle s'adapte sans effort à tous les types de cheveux et assure un toilettage polyvalent et efficace.

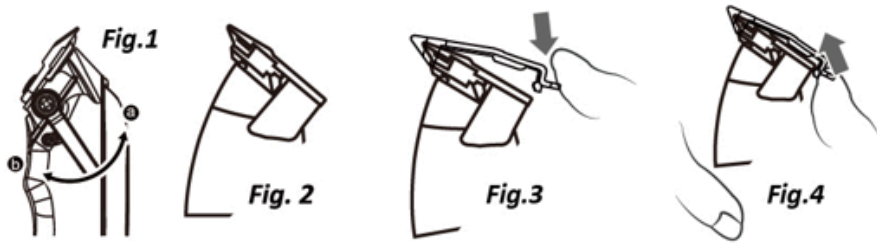
- TK** STC5000 Pro Clipper Lite ile etkileyici 210 dakikalık yüksek performanslı kablosuz kullanım deneyimini yaşayın. Etkileyici 6000 RPM hızında çalışan; tüm saç tiplerine zahmetsizce uyum sağlar ve çok yönlü ve etkili bir bakım sağlar.



Fig. 1

1. Power on Pro Clipper Lite to assure the motor & blades are working properly. Do not use if blades are broken; contact customer service.
 2. Adjust lever and use the clipper upwards more along the hair & cut to your desired length.
 3. Use the provided guide combs to cut at different lengths.
- SP** 1. Encienda la cortadora Pro Clipper Lite para asegurarse de que el motor y las cuchillas funcionen correctamente. No la use si las cuchillas están rotas; comuníquese con el servicio de atención al cliente.
2. Ajuste la palanca y use la cortadora hacia arriba, más a lo largo del cabello, y corte al largo deseado.
3. Use los peines guía provistos para cortar a diferentes largos.
- DE** 1. Schalten Sie den Pro Clipper Lite ein, um sicherzustellen, dass Motor und Klingen ordnungsgemäß funktionieren. Verwenden Sie den Clipper nicht, wenn die Klingen kaputt sind. Wenden Sie sich an den Kundendienst.
2. Stellen Sie den Hebel ein und bewegen Sie den Haarschneider weiter nach oben entlang des Haares, um die gewünschte Länge zu erreichen.
3. Verwenden Sie die mitgelieferten Führungskämme, um auf unterschiedliche Längen zu schneiden.
- PT** 1. Ligue o Pro Clipper Lite para garantir que o motor e as lâminas estejam funcionando corretamente. Não use se as lâminas estiverem quebradas; entre em contato com o serviço de atendimento ao cliente.
2. Ajuste a alavanca e use o aparador para cima mais ao longo do cabelo e corte no comprimento desejado.
3. Use os pentes-guia fornecidos para cortar em comprimentos diferentes.
- FR** 1. Allumez la tondeuse Pro Clipper Lite pour vous assurer que le moteur et les lames fonctionnent correctement. Ne l'utilisez pas si les lames sont cassées ; contactez le service client.
2. Réglez le levier et utilisez la tondeuse vers le haut le long des cheveux et coupez à la longueur souhaitée.
3. Utilisez les peignes de guidage fournis pour couper à différentes longueurs.
- TK** 1. Motor ve bıçakların düzgün çalıştığından emin olmak için Pro Clipper Lite'ı açın. Bıçaklar kırılmışsa kullanmayın; müşteri hizmetleriyle iletişime geçin.
2. Kolu ayarlayın ve saç kesme makinesini saç boyunca yukarı doğru kullanın ve istediğiniz uzunlukta kesin.
3. Farklı uzunluklarda kesmek için verilen kılavuz taraqları kullanın.

LEVER, GUIDE COMBS & REPLACEMENTS



Pro Clipper Lite is equipped with a Non click lever that allows to change taper or fade level for your cut. Pushing the lever upwards gives the closes cut; downwards increases the cutting length.

STC5000 includes 4 sized guide combs; 3mm, 6mm, 10mm & 13mm.

Cut hair at different lengths; easy to put and remove with these steps:

- Insert the blade teeth into the guard and push down the end bill.

- To remove; lift end bill & detach.

Additional guide combs are available to purchase in 5 different colors, CMG100. (See QR code on PG 11)

SP Pro Clipper Lite está equipada con una palanca sin clic que permite cambiar el nivel de corte. Si empuja la palanca hacia arriba, obtendrá un corte más cerrado y, si empuja hacia abajo, aumentará la longitud de corte. STC5000 incluye peines guía de 4 tamaños: 3 mm, 6 mm, 10 mm y 13 mm. Corta el cabello a diferentes longitudes; es fácil de colocar y quitar con estos pasos:

- Inserte los dientes de la cuchilla en el protector y presione hacia abajo la punta.
- Para quitar, levante la punta y desprendala.
Se pueden comprar peines guía adicionales en 5 colores diferentes, CMG100. (Consulte el código QR en la página 11)

DE Pro Clipper Lite ist mit einem klickfreien Hebel ausgestattet, mit dem Sie die Verjüngung oder den Ausblendungsgrad für Ihren Schnitt ändern können. Wenn Sie den Hebel nach oben drücken, erhalten Sie einen dichteren Schnitt; wenn Sie ihn nach unten drücken, wird die Schnittlänge erhöht. STC5000 enthält Führungskämme in 4 Größen: 3 mm, 6 mm, 10 mm und 13 mm. Schneiden Sie Haare in unterschiedlichen Längen; mit diesen Schritten ist das Einsetzen und Entfernen einfach:

- Setzen Sie die Klingenzähne in den Schutz ein und drücken Sie das Endstück nach unten.
- Zum Entfernen heben Sie das Endstück an und lösen es.
Zusätzliche Führungskämme sind in 5 verschiedenen Farben erhältlich, CMG100. (Siehe QR-Code auf Seite 11)

PT O Pro Clipper Lite é equipado com uma alavanca anti-clic que permite alterar o nível deafunilamento ou desbotamento do seu corte. Empurrar a alavanca para cima dá o corte mais fechado; para baixo aumenta o comprimento do corte. O STC5000 inclui pentes-guia de 4 tamanhos; 3 mm, 6 mm, 10 mm e 13 mm.

PT Corte o cabelo em comprimentos diferentes; fácil de colocar e remover com estas etapas:

- Insira os dentes da lâmina na proteção e empurre a aba final para baixo.
- Para remover; levante a aba final e destaque.
Pentes-guia adicionais estão disponíveis para compra em 5 cores diferentes, CMG100. (Veja o código QR na PG 11)

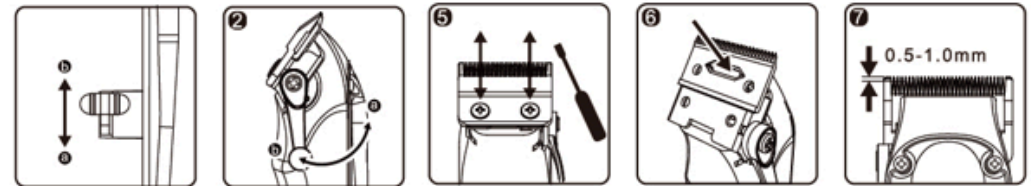
FR La tondeuse Pro Clipper Lite est équipée d'un levier sans clic qui permet de changer le niveau de conicité ou de fondu de votre coupe. Pousser le levier vers le haut donne la coupe rapprochée ; vers le bas augmente la longueur de coupe. La STC5000 comprend 4 peignes de guidage de tailles ; 3 mm, 6 mm, 10 mm et 13 mm. Coupez les cheveux à différentes longueurs ; facile à mettre et à retirer en suivant ces étapes :

- Insérez les dents de la lame dans la protection et appuyez sur l'extrémité.
- Pour retirer ; soulevez l'extrémité et détachez.
Des peignes de guidage supplémentaires sont disponibles à l'achat en 5 couleurs différentes, CMG100. (Voir le code QR sur la page 11)

TK Pro Clipper Lite, kesiminizin konikleşmesini veya solma seviyesini değiştirmenize olanak tanıyan bir Tıklamasız kol ile donatılmıştır. Kolu yukarı doğru itmek kesimi kapatır; aşağı doğru itmek kesme uzunluğunu artırır. STC5000, 4 boyutlu kılavuz tarak içerir; 3 mm, 6 mm, 10 mm ve 13 mm. Farklı uzunluklarda saç kesin; bu adımlarla takması ve çıkarması kolaydır.

- Bıçak dişlerini koruyucuya yerleştirin ve uç siperini aşağı doğru itin.
- Çıkarmak için; uç siperini kaldırın ve çıkarın.
5 farklı renkte ek kılavuz tarakları satın alabilirsiniz, CMG100. (PG 11'deki QR koduna bakın)

CERAMIC TAPER OR STEEL FADE BLADE



Whether you want to create beautiful fades or crisp tapers, Pro Clipper Lite has both blades available to achieve the desired cut.

STC5000 comes equipped with a Stainless Steel Fade Blade CBF424.

Ceramic Taper Blade CBT818 is available to purchase separately.

To change blades follow the steps below:

1. Switch the appliance off & disconnect the power supply.
2. Set the lever to the shortest cutting length (towards the face of the clipper).
3. Undo the screws on the blade set and remove the top blade.
4. Place the bottom blade on the plastic cam.
5. Position the top blade aligned to the bottom blade with a 0.5-1mm gap at the front edge of the blades, then tighten the screws.

- SP** Ya sea que desee crear hermosos degradados o cortes cónicos nítidos, Pro Clipper Lite tiene ambas cuchillas disponibles para lograr el corte deseado. La STC5000 viene equipada con una cuchilla de acero inoxidable CBF424. La cuchilla cónica de cerámica CBT818 está disponible para comprar por separado. Para cambiar las cuchillas, siga los pasos a continuación:
1. Apague el aparato y desconecte la fuente de alimentación.
 2. Coloque la palanca en la longitud de corte más corta (hacia la parte frontal de la cortadora).
 3. Afloje los tornillos del juego de cuchillas y retire la cuchilla superior.
 4. Coloque la cuchilla inferior en la leva de plástico.
 5. Coloque la cuchilla superior alineada con la cuchilla inferior con un espacio de 0,5 a 1 mm en el borde frontal de las cuchillas, luego ajuste los tornillos.

- DE** Egal, ob Sie schöne Fade- oder scharfe Taper-Schnittlinien erstellen möchten, Pro Clipper Lite hat beide Klingen zur Verfügung, um den gewünschten Schnitt zu erzielen. STC5000 ist mit einer Fade-Klinge CBF424 aus Edelstahl ausgestattet. Die Keramik-Taper-Klinge CBT818 ist separat erhältlich. Um die Klingen zu wechseln, gehen Sie wie folgt vor:
1. Schalten Sie das Gerät aus und trennen Sie die Stromversorgung.
 2. Stellen Sie den Hebel auf die kürzeste Schnittlänge (in Richtung der Vorderseite des Haarschneiders).
 3. Lösen Sie die Schrauben am Klingensatz und entfernen Sie die obere Klinge.
 4. Platzieren Sie die untere Klinge auf der Kunststoffnocke.
 5. Positionieren Sie die obere Klinge ausgerichtet zur unteren Klinge mit einem Abstand von 0,5–1 mm an der Vorderkante der Klingen und ziehen Sie dann die Schrauben fest.

- PT** Quer você queira criar lindos desbotamentos ou cortes nítidos, o Pro Clipper Lite tem ambas as lâminas disponíveis para obter o corte desejado. O STC5000 vem equipado com uma lâmina de desbotamento de aço inoxidável CBF424. A lâmina cônica de cerâmica CBT818 está disponível para compra separadamente. Para trocar as lâminas, siga as etapas abaixo:
1. Desligue o aparelho e desconecte a fonte de alimentação.
 2. Ajuste a alavanca para o menor comprimento de corte (em direção à face do aparador).
 3. Desfaça os parafusos no conjunto de lâminas e remova a lâmina superior.
 4. Coloque a lâmina inferior no came de plástico.
 5. Posicione a lâmina superior alinhada à lâmina inferior com uma folga de 0,5-1 mm na borda frontal das lâminas e aperte os parafusos.

- FR** Que vous souhaitez créer de beaux dégradés ou des coupes effilées nettes, Pro Clipper Lite propose les deux lames disponibles pour obtenir la coupe souhaitée. Le STC5000 est équipé d'une lame de dégradé en acier inoxydable CBF424. La lame conique en céramique CBT818 est disponible à l'achat séparément. Pour changer les lames, suivez les étapes ci-dessous :
1. Éteignez l'appareil et débranchez l'alimentation électrique.
 2. Réglez le levier sur la longueur de coupe la plus courte (vers la face de la tondeuse).
 3. Dévissez les vis du jeu de lames et retirez la lame supérieure.
 4. Placez la lame inférieure sur la came en plastique.
 5. Positionnez la lame supérieure alignée sur la lame inférieure avec un espace de 0,5 à 1 mm sur le bord avant des lames, puis serrez les vis.

- TK** İster güzel solgunluklar ister keskin konikler yaratmak isteyin, Pro Clipper Lite istediğiniz kesimi elde etmek için her iki bıçağa da sahiptir. STC5000, Paslanmaz Çelik Solgunluk Bıçağı CBF424 ile donatılmıştır. Seramik Konik Bıçak CBT818 ayrı olarak satın alınabilir. Bıçakları değiştirmek için aşağıdaki adımları izleyin:
1. Cihazı kapatın ve güç kaynağını kesin.
 2. Kolu en kısa kesme uzunluğuna (makinenin ön yüzüne doğru) ayarlayın.
 3. Bıçak setindeki vidaları sökün ve üst bıçağı çıkarın.
 4. Alt bıçağı plastik kama yerleştirin.
 5. Üst bıçağı, bıçakların ön kenarında 0,5-1 mm boşluk kalacak şekilde alt bıçağa hizalayın, ardından vidaları sıkın.

CHARGING / WARNING

240 Minute Full Charge / 210 Minute Use Time
Can be used Corded or Cordless. 100-240V Worldwide Voltage.

- SP** Carga completa de 240 minutos/tiempo de uso de 300 minutos
Se puede utilizar con cable o inalámbrico. Voltaje mundial de 100-240 V.
- DE** 240 Minuten Vollladung / 210 Minuten Nutzungsdauer
Kann kabelgebunden oder kabellos verwendet werden. 100–240 V weltweite Spannung.
- PT** Carga completa de 240 minutos / Tempo de uso de 210 minutos
Pode ser usado com ou sem fio. Tensão mundial de 100-240V.
- FR** Charge complète de 240 minutes / Durée d'utilisation de 210 minutes
Peut être utilisé avec ou sans fil. Tension mondiale 100-240 V.
- TK** 240 Dakika Tam Şarj / 210 Dakika Kullanım Süresi
Kablolu veya Kablosuz olarak kullanılabilir. 100-240V Dünya Çapında Gerilim.



**ATTENTION / WARNING**

1. KEEP AWAY FROM CHILDREN. This is NOT a toy!
2. Do NOT use if blades are BROKEN.
3. Always disconnect/turn off when cleaning Clipper.
4. Clipper is NOT waterproof. To prevent electric shock, do NOT wet.

For any question or concerns, please contact customer service (PG 12)
Worldwide Suppliers is NOT responsible for injuries due to mishandling.

SP

**ATENCIÓN / ADVERTENCIA**

1. MANTENER ALEJADO DE LOS NIÑOS. ¡Esto no es un juguete!
2. NO lo use si las cuchillas están ROTAS.
3. Siempre desconecte/apague cuando limpie el Clipper.
4. La cortadora NO es resistente al agua. Para evitar descargas eléctricas, NO lo moje.

Para cualquier pregunta o inquietud, comuníquese con el servicio de atención al cliente (PG 12).
Worldwide Suppliers NO es responsable de las lesiones debidas a un mal manejo.

DE

**ACHTUNG / WARNUNG**

1. VON KINDERN FERNHALTEN. Dies ist KEIN Spielzeug!
2. NICHT verwenden, wenn die Klingen ZERBROCHEN sind.
3. Trennen Sie den Clipper immer vom Stromnetz bzw. schalten Sie ihn aus, wenn Sie ihn reinigen.
4. Der Clipper ist NICHT wasserdicht. Um einen Stromschlag zu vermeiden, darf das Gerät NICHT nass gemacht werden.

Bei Fragen oder Bedenken wenden Sie sich bitte an den Kundendienst (PG 12).
Worldwide Supplier ist NICHT verantwortlich für Verletzungen, die durch unsachgemäße Handhabung entstehen.

PT

**ATENÇÃO / AVISO**

1. MANTENHA LONGE DAS CRIANÇAS. Isso não é um brinquedo!
2. NÃO use se as lâminas estiverem QUEBRADAS.
3. Sempre desconecte/desligue ao limpar o Clipper.
4. O Clipper NÃO é à prova d'água. Para evitar choque elétrico, NÃO molhe.

Para qualquer dúvida ou preocupação, entre em contato com o atendimento ao cliente (PG 12)
Os fornecedores mundiais NÃO são responsáveis por ferimentos devido ao manuseio incorreto.

FR

**ATTENTION / AVERTISSEMENT**

1. GARDER LOIN DES ENFANTS. Ce n'est pas un jouet!
2. Ne PAS utiliser si les lames sont CASSEES.
3. Déconnectez/éteignez toujours lors du nettoyage de la tondeuse.
4. La tondeuse n'est PAS étanche. Pour éviter les chocs électriques, ne mouillez PAS.

Pour toute question ou préoccupation, veuillez contacter le service client (PG 12)
Les fournisseurs mondiaux ne sont PAS responsables des blessures dues à une mauvaise manipulation.

TK

**DİKKAT / UYARI**

1. ÇOCUKLARDAN UZAK TUTUN. Bu bir oyuncak DEĞİLDİR!
2. Bıçaklar KIRIK ise KULLANMAYIN.
3. Clipper'ı temizlerken daima bağlantıyı kesin/kapatın.
4. Clipper su geçirmez DEĞİLDİR. Elektrik çarpmasını önlemek için ıslatmayın.

Herhangi bir soru veya endişeniz için lütfen müşteri hizmetleriyle iletişime geçin (PG 12)
Yanlış kullanımdan kaynaklanan yaralanmalardan Dünya Çapındaki Tedarikçiler sorumlu DEĞİLDİR.

FOR MORE INFORMATION

For more information on Pro Clipper Lite, Scan QR Code below:

- SP Para obtener más información sobre Pro Clipper Lite, escanee el código QR a continuación:
- DE Für weitere Informationen zu Pro Clipper Lite scannen Sie den untenstehenden QR-Code:
- PT Para mais informações sobre o Pro Clipper Lite, escaneie o código QR abaixo:
- FR Pour plus d'informations sur Pro Clipper Lite, scannez le code QR ci-dessous :
- TK Pro Clipper Lite hakkında daha fazla bilgi için aşağıdaki QR Kodunu tarayın:



Pro Clipper Lite

For replacement Blades & Guide combs see below:



Scan for CMG100



Scan for Replacement Blades

WARRANTY INFORMATION

12 MONTH LIMITED WARRANTY AGAINST ANY INTERNAL DEFECTS

Our product includes warranty against any internal, battery and motor defects for 1 year from the date of purchase. Any product determined to be defecting during the warranty period will be repaired or replaced without the cost of parts or labor to the customer.

The 12 month warranty will not cover any damages done to the blade, body or accessories due to dropping & mishandling the unit.

CUSTOMER SERVICE

Please reach out to our Customer Service team for any Questions or Concerns regarding your Pro Clipper Lite. We are here to assist on all matters and take great pride in taking care of our customers.



Scan QR code to Submit a " Contact Me" Form

Call, Text OR Email: M-F 8 AM-3 PM PST
Email: support@supremetrimmer.com
Phone: +1 (818) 626-8065 (USA)
Website: WWW.SUPREMETRIMMER.COM