

HEY CREATOR !

Please take the time to Rate & Review our product based on your experience.
Your Reviews help people learn about the product & for our brand to grow further.

The Reviews also help us understand customers Thoughts,
needs and requirements, We value your feedback.

SCAN & CHECK OUT MORE PRODUCTS TO ENJOY!



Clippers



Trimmers



Shavers



Replacements

For Additional Questions or comments
please email support@SupremeTrimmer.com

SUPREME[®]

T R I M M E R



T-SHAPER MODEL: ST5220

USER GUIDE

GUÍA DEL USUARIO | BENUTZERHANDBUCH |
MANUAL DO UTILIZADOR |
MANUEL UTILISATEUR | KULLANICI REHBERI

CONGRATULATIONS ON YOUR NEW TOOL!

**Our tools are customized from the Motor, Battery, Blade,
PCB & Color & Design.**

To ensure you get the most out of your new product,
please take a moment to read the included user manual for setup
instructions and maintenance tips.

We test each product and each tool is assembled by hand!

That's right,

Your tool is HAND MADE and tested before boxing in various ways!

If for any reason you are not Satisfied or something just isn't right,
PLEASE contact us and let our team guide you towards resolution.

We pride our tools, , customers and giving satisfaction.

Any product with Battery,

Motor or PCB issues are replaced Free of charge.

For Additional Questions or comments
please email support@SupremeTrimmer.com

Tag @SupremeTrimmer #SupremeTrimmer
while using your tool to Be Featured!

Follow Us On Social Media



@SUPREMETRIMMER

We hope this purchase enhances your life,
and we look forward to serving you again in the future.
Thank you for being a valued customer of Supreme Trimmer.

WARNING:



Always Keep the Trimmer dry. DO NOT use in bath
or shower.

- This Trimmer is not intended for use by persons (including children) with reduced physical, sensory or mental capabilities, or lack of experience any knowledge, unless they have been given supervision or instruction concerning use of the appliance by a person responsible for their safety.
- Children should be supervised to ensure that they do not play with the Trimmer.
- To prevent possible harm to the environment or human health from uncontrolled waste disposal, such as the unused batteries and motors etc. Recycle them responsibly to promote the sustainable reuse of material resources.
- To return your used device, please use the return and collection systems or contact the retailer where the product was purchased. They can take this product for environmentally safe recycling.

CAUTIONS:

- Clean the Device using only a cloth slightly dampened with water or a mild soap solution. Never use a caustic solution.
- Never submerge the Device in water.
- Keep away from children.
- When using, do not hold the power soft line, to prevent possible harm and to avoid accidents.
- Never tamper with moving or loose parts.
- Make sure to charge at least one time within one year after purchase.

CHARGING:

- ▶ Before using for first time, please charge 90 Min. to activate the rechargeable batteries.
- ▶ DO NOT charge if the temperature is lower than 0°C or higher than 40°C.
- ▶ DO NOT charge if it is near the sunlight perpendicular incidence or if the heat source radiates.
- ▶ When fully charged, Device can be used for Approx. 90 minutes. During charging, the indicator light shows red.
- ▶ Push the switch button to ON, then it can be used.

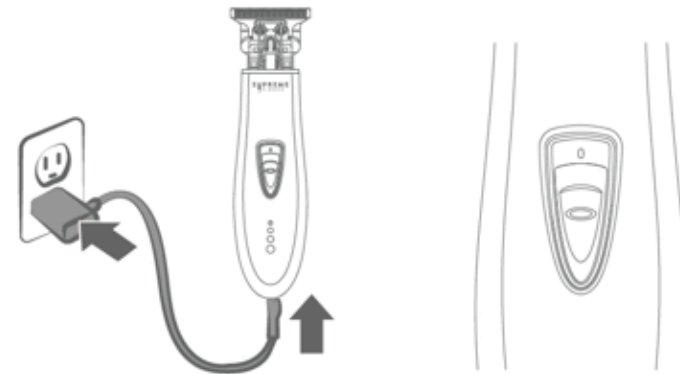
Parts Identification:



- 1 T-Shaper Men's Trimmer
- 2 Guided Combs (1mm)
- 3 Guided Combs (2mm)
- 4 Guided Combs (3mm)
- 5 Red Blade Cover
- 6 Cleaning Brush
- 7 USB Charger
- 8 Wall Charger
- 9 Wireless Charger Stand
- 10 Oil for Blade's
- 11 Travel Bag
- 12 Hair Cover
- 13 Cape

How to use T-Shaper:

- ★ Our Trimmer can be used corded and cordless.
- ★ Put the Charger adaptor with the jack of the battery pack which lies at the bottom of the Device, then put the adaptor pins connected with power to successfully Charge.



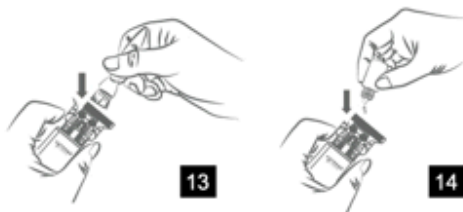
Comb Attachment Use:

1. Please ensure the power switch is at OFF position. Proceed to Attach combs 1, 2, 3mm for different cutting length (picture 11)
2. Push the comb From Handle, (picture 12), you can change the comb with other size's.



Maintenance of the blades:

Model: TB531 SILVER, TB531 GOLD



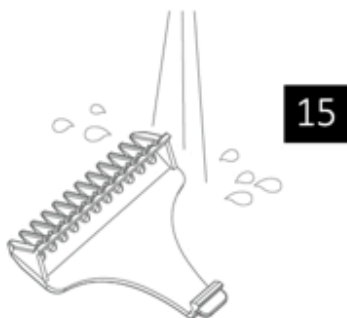
- ★ Use the brush to clean the blade to remove hair which may be caught between the blades. Lubricate the space between the stationary and moving blades with 2 or 4 drops of oil after a few uses.



Buy T Shaper Blades

Cleaning under the tap:

Clean the cutting element and comb under a warm tap after every use (Fig. 15).



4

ONE YEAR WARRANTY

Supreme Trimmer provides Warranty for this new product (except foils, Cutters, Blades & Guards) against product defect for 1 year from purchase date. We agree to replace any defective product without charge. We do not cover damage resulting from Accident, Misuse, Drops, or lack of reasonable care.



Customer Service / Contact us

CUSTOMER SERVICE (UNLIMITED)

Phone: +1 (818) 626-8065

Website: www.SupremeTrimmer.com

Email: Support@supremetrimmer.com

TECHNICAL SPECS:

- LED Battery Indicator
- 90 Minutes of Continued use (600mA Lithium-ion Battery)
- 7000 Rpm Motor
- Stainless Steel Blade (Model # TB531 Gold, TB531 Silver)
- Ergonomic / Skeleton / Easy to use
- Lightweight Design
- Cord / Cordless
- 100-240V Worldwide Voltage



5

HEY CREATOR !

Please take the time to Rate & Review our product based on your experience.
Your Reviews help people learn about the product & for our brand to grow further.

The Reviews also help us understand customers Thoughts,
needs and requirements, We value your feedback.

SCAN & CHECK OUT MORE PRODUCTS TO ENJOY!



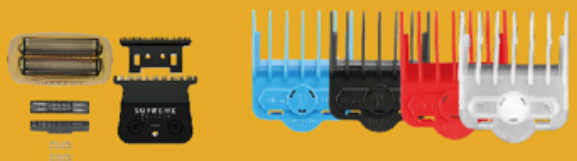
Clippers



Trimmers



Shavers



Replacements

For Additional Questions or comments
please email support@SupremeTrimmer.com

SUPREME[®]

T R I M M E R



T-SHAPER MODEL: ST5200, ST5210

USER GUIDE

GUÍA DEL USUARIO | BENUTZERHANDBUCH |
MANUAL DO UTILIZADOR |
MANUEL UTILISATEUR | KULLANICI REHBERI

CONGRATULATIONS ON YOUR NEW TOOL!

**Our tools are customized from the Motor, Battery, Blade,
PCB & Color & Design.**

To ensure you get the most out of your new product,
please take a moment to read the included user manual for setup
instructions and maintenance tips.

We test each product and each tool is assembled by hand!
That's right,

Your tool is **HAND MADE** and tested before boxing in various ways!

If for any reason you are not Satisfied or something just isn't right,
PLEASE contact us and let our team guide you towards resolution.

We pride our tools, , customers and giving satisfaction.

Any product with Battery,
Motor or PCB issues are replaced Free of charge.

For Additional Questions or comments
please email support@SupremeTrimmer.com

Tag **@SupremeTrimmer** **#SupremeTrimmer**
while using your tool to Be Featured!

Follow Us On Social Media



@SUPREMETRIMMER

We hope this purchase enhances your life,
and we look forward to serving you again in the future.
Thank you for being a valued customer of Supreme Trimmer.

WARNING:



Always Keep the Trimmer dry. DO NOT use in bath
or shower.

- ▶ This Trimmer is not intended for use by persons (including children) with reduced physical, sensory or mental capabilities, or lack of experience any knowledge, unless they have been given supervision or instruction concerning use of the appliance by a person responsible for their safety.
- ▶ Children should be supervised to ensure that they do not play with the Trimmer.
- ▶ To prevent possible harm to the environment or human health from uncontrolled waste disposal, such as the unused batteries and motors etc. Recycle them responsibly to promote the sustainable reuse of material resources.
- ▶ To return your used device, please use the return and collection systems or contact the retailer where the product was purchased. They can take this product for environmentally safe recycling.

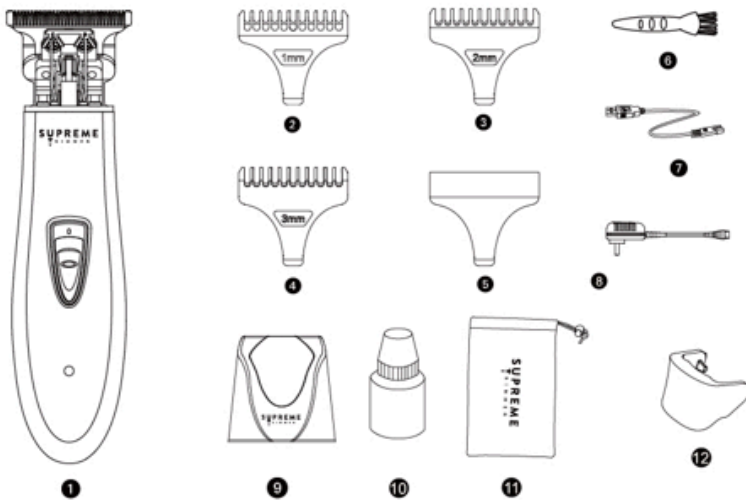
CAUTIONS:

- ▶ Clean the Device using only a cloth slightly dampened with water or a mild soap solution. Never use a caustic solution.
- ▶ Never submerge the Device in water.
- ▶ Keep away from children.
- ▶ When using, do not hold the power soft line, to prevent possible harm and to avoid accidents.
- ▶ Never tamper with moving or loose parts.
- ▶ Make sure to charge at least one time within one year after purchase.

CHARGING:

- ▶ Before using for first time, please charge 90 Min. to activate the rechargeable batteries.
- ▶ DO NOT charge if the temperature is lower than 0°C or higher than 40°C.
- ▶ DO NOT charge if it is near the sunlight perpendicular incidence or if the heat source radiates.
- ▶ When fully charged, Device can be used for Approx. 90 minutes. During charging, the indicator light shows red.
- ▶ Push the switch button to ON, then it can be used.

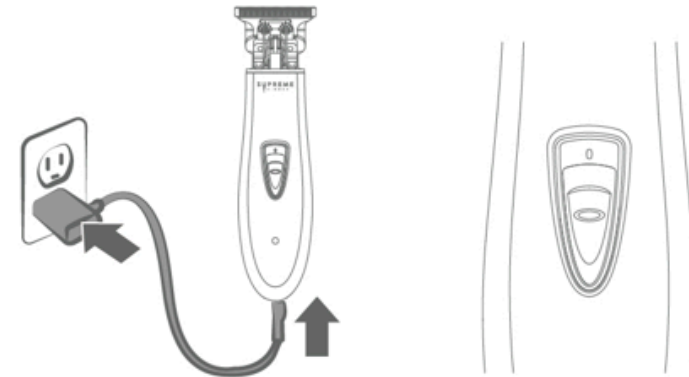
Parts Identification:



- | | |
|--------------------------|----------------------|
| ❶ T-Shaper Men's Trimmer | ❷ Guided Combs (1mm) |
| ❸ Guided Combs (2mm) | ❹ Guided Combs (3mm) |
| ❺ Red Blade Cover | ❻ Cleaning Brush |
| ❼ USB Charger | ❽ Wall Charger |
| ❾ Wireless Charger Stand | ❿ Oil for Blade's |
| ⓫ Travel Bag | ⓬ Hair Cover |

How to use T-Shaper:

- ★ Our Trimmer can be used corded and cordless.
- ★ Put the Charger adaptor with the jack of the battery pack which lies at the bottom of the Device, then put the adaptor pins connected with power to successfully Charge.



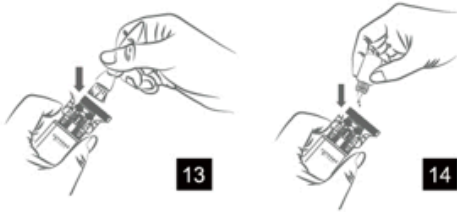
Comb Attachment Use:

1. Please ensure the power switch is at OFF position. Proceed to Attach combs 1, 2, 3mm for different cutting length (picture 11)
2. Push the comb From Handle, (picture 12), you can change the comb with other size's.



Maintenance of the blades:

Blade Model: 52100M, 52100G



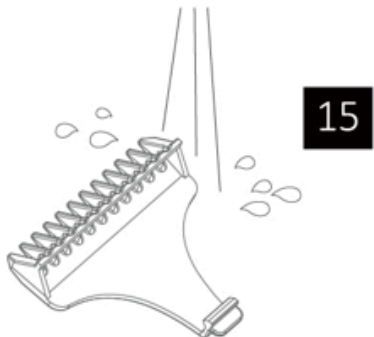
- ★ Use the brush to clean the blade to remove hair which may be caught between the blades. Lubricate the space between the stationary and moving blades with 2 or 4 drops of oil after a few uses.



Buy T Shaper Blades

Cleaning under the tap:

Clean the cutting element and comb under a warm tap after every use (Fig. 15).



4

ONE YEAR WARRANTY

Supreme Trimmer provides Warranty for this new product (except foils, Cutters, Blades & Guards) against product defect for 1 year from purchase date. We agree to replace any defective product without charge. We do not cover damage resulting from Accident, Misuse, Drops, or lack of reasonable care.



Customer Service / Contact us

CUSTOMER SERVICE (UNLIMITED)

Phone: +1 (818) 626-8065

Website: www.SupremeTrimmer.com

Email: Support@supremetrimmer.com

TECHNICAL SPECS:

- LED Battery Indicator
- 90 Minutes of Continued use (600mA Lithium-ion Battery)
- 7000 Rpm Motor
- Stainless Steel Blade (Model # 52100M, 52100G)
- Ergonomic / Skeleton / Easy to use
- Lightweight Design
- Cord / Cordless
- 100-240V Worldwide Voltage



5