

ELEVATE YOUR CRAFT WITH

SUPREME[®]

TRIMMER

SCAN & CHECK OUT MORE PRODUCTS TO ENJOY



Welcome to Our
Amazon Storefront



Welcome to Our
website



Barber Approved,
Barber Suggested



From the Comfort of
Your Own Home



Get Salon
Worthy Hair



Regain your
Confidence with Hair
Fibers



In With the New



Represent
Anywhere, Anytime



SUPREME[®]

TRIMMER



AIRBRUSH GUN KIT | MODEL NO.: AG1

USER GUIDE

CONGRATULATIONS ON YOUR NEW TOOL!

**Our tools are customized from the Motor, Battery, Blade,
PCB & Color & Design.**

To ensure you get the most out of your new product,
please take a moment to read the included user manual for setup
instructions and maintenance tips.

We test each product and each tool is assembled by hand!

That's right,

Your tool is HAND MADE and tested before boxing in various ways!

If for any reason you are not Satisfied or something just isn't right,
PLEASE contact us and let our team guide you towards resolution.

Any product with Battery,

Motor or PCB issues are replaced Free of charge.

We take pride in our tools & customer service.

For Additional Questions or comments
please email support@SupremeTrimmer.com

Tag @SupremeTrimmer #SupremeTrimmer
while using your tool to Be Featured!

Follow Us On Social Media



@SUPREMETRIMMER

We hope this purchase enhances your life,
and we look forward to serving you again in the future.
Thank you for being a valued customer of Supreme Trimmer.

User Manual Warranty Card

PG 1-2: OVERVIEW

PG 3: ACCESORIES / FUNCTION

PG 4: HOW TO USE / MAINTENANCE

PG 5: FAQ

PG 6: CHARGING & BATTERY

PG 7: WARNING

PG 8: WARRANTY /CUSTOMER SERVICE

TECHNICAL PARAMETER:

Aeration Flow: 0.12mm	WaterTank Capacity: 5-15-35ml
Input Voltage: 5V 1A	Power: 6W
Battery Capacity: 1200mAH	Charging Method: USB-C
Charging Time: 1.5 Hours	Working Time: 1 Hour

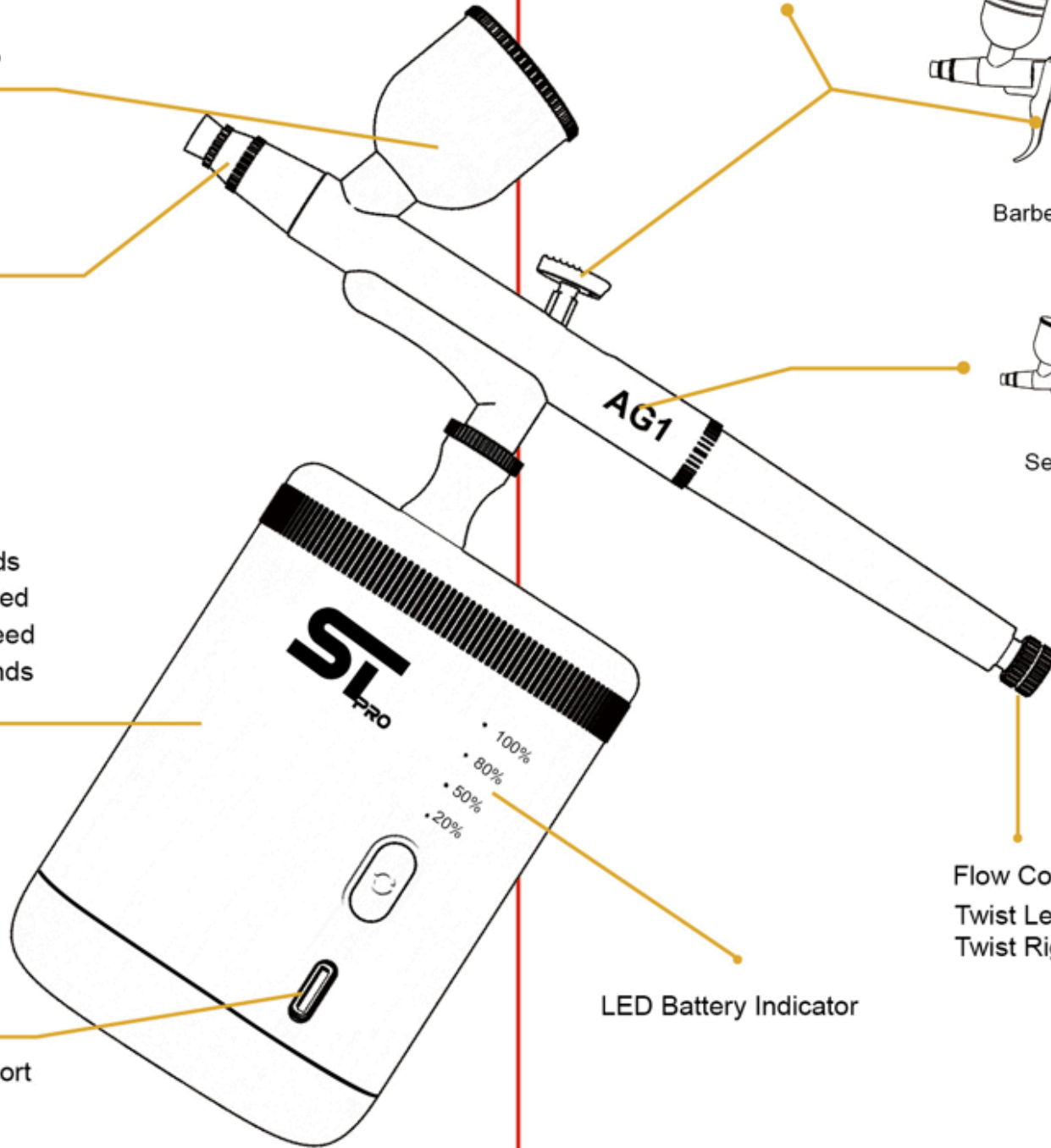


Material Cup

Nozzle

Power Button
ON: Hold 3 Seconds
Click 1: Lower Speed
Click 2: Higher Speed
OFF: Hold 3 Seconds

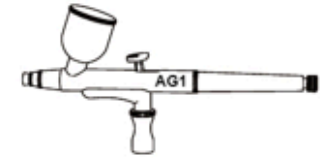
USB-C Charging Port



Spray Trigger



Barber Style Gun



Self Use Style Gun

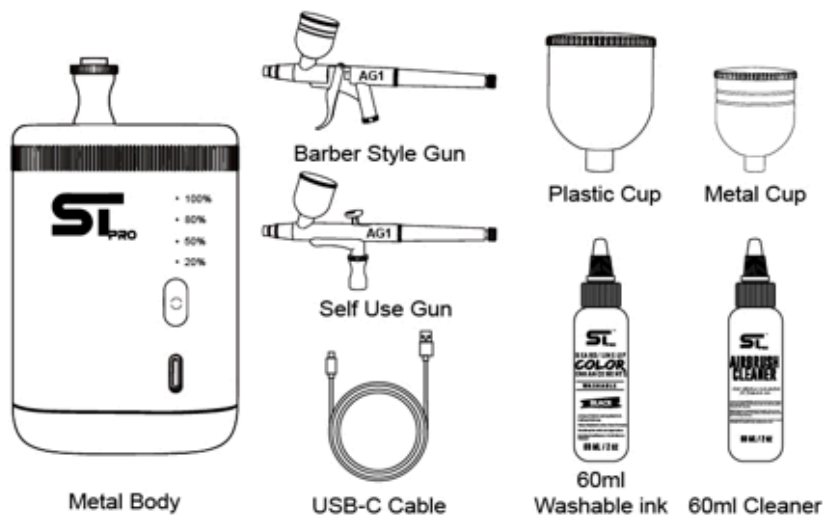
Flow Control
Twist Left: More Flow
Twist Right: Less Flow

LED Battery Indicator

1

2

ACCESSORIES / FUNCTIONS



Step up your artistry game with Supreme Trimmers Airbrush Gun Kit. Whether you're a starter, pro, makeup artist, barber or nail tech; this kit includes what you need: a wireless compressor, a self use style gun, a barber style gun, a metal Ink/Paint cup, a larger plastic cup, a cleaning solution, washable hair ink for the barbers and a charging cord.

The Self Use Gun is intended for a wider spray to cover more areas when using it yourself on your head and beard.

The Barber Style Gun is intended for a precise and concentrated spray when creating designs or shaping beards & hairlines.

Our kit includes a 60ml Washable ink for starters who are practicing using a airbrush gun. The washable ink is convenient for washing off and starting your spray training all over again.

A 60ml airbrush cleaner is provided to remove residue, clean out color enhancements and keep your gun clog free.

HOW TO USE / MAINTENANCE

Choose your nozzle/gun style of choice.

Install your cup on the gun & then install the gun on your compressor.



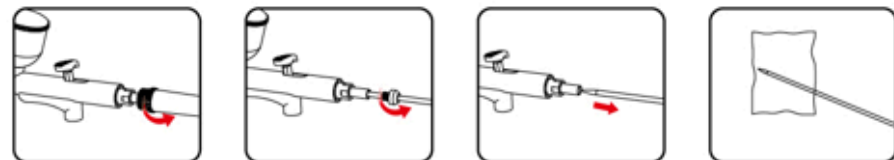
Fill your cup with ink, paint, polish, make-up of choice. Note: Make sure your liquids are airbrush safe or dilute with alcohol/water until it's a watery consistency. Using thick inks or liquids can cause clogs and potentially damage the airbrush gun.

Hold the power button for 3 seconds to power on compressor. For a stronger dispense, click the power button once to change to a higher speed. Hold the power button for 3 seconds to shut off.

Press spray trigger down and pull back to spray. Do a test spray to adjust your flow control.

When done, dispose of left over liquids and remove cup/airbrush gun from the compressor. Fill a cup or bowl with the included cleaning solution and let parts soak. Do not leave any liquids over night as they can create residue or clogs which will damage the airbrush gun.

Once done soaking, remove flow control cap, remove nozzle needle and wipe clean with a dry cloth.



1. Unscrew the casing to open it.

2. Unscrew the needle-shaped nut.

3. Pull out the built-in long needle.

4. Wipe it clean with a dry cloth.

FAQ

1. What should I do if the airbrush is clogged?

Soak in provided cleaning solution and rinse with water. Fully dry before use.

Solution:

- Filter and dilute the paint.
- Rinse the airbrush with clean water.
- Increase the air pressure repeatedly to flush out the airbrush.

2. Why is the paint not coming out?

The main reason is a clogged nozzle. Other possible causes include thick paint, the needle not being properly installed, or insufficient air pressure.

Solution:

- Carefully clean the nozzle to clear the blockage. Dilute the paint with the appropriate thinner and spray again.
- Adjust the needle and tighten if necessary.
- Check the air pressure on the airbrush.

3. The airbrush cannot spray air, but it can spray water, nail polish, and paint.

This may be due to the needle not being aligned with the nozzle.

Solution:

- Please tighten the nozzle to be level with the body of the device.

4. Why are there bubbles in the liquid cup?

Air pressure enters the liquid cup. This may be due to a loose nozzle/air cap or a dry clogged nozzle.

Solution:

- Check the tightness of the nozzle – tighten if necessary.
- Clean/clear the nozzle – perform a thorough cleaning.
- If the nozzle sealing ring is damaged – replace the nozzle sealing ring.



5. Why does the nozzle drip or mist when the device is turned on?

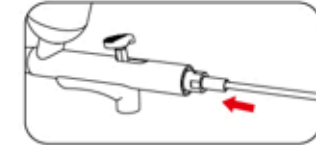
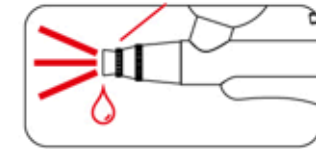
5

The steel needle moves backward, creating a gap.

Solution:

Loosen the nut that secures the steel needle, push the needle all the way in, and then tighten the nut.

Automatic Spray on Power On



6. Sudden stop of operation or unable to turn on?

Please check if the device has sufficient battery power and if the nozzle is clogged.

Solution:

Try fully charging the device or thoroughly cleaning the nozzle.

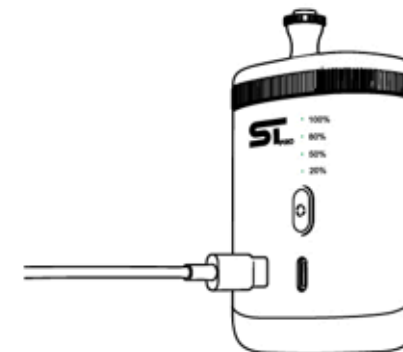
CHARGING AND INDICATOR LIGHT

The Supreme Trimmer Airbrush Compressor has LED Battery Lights to let our users know when it's almost time to charge.

We make it easy for our customers, a USB-C cord is included in the kit, but if misplaced, any USB-C cord can be used to charge the machine.

1.5 Hours Charge Time for 1 Hour Run Time!

The compressor is wireless for the convenience of not dealing with a cord.



6



ATTENTION / WARNING



1. KEEP AWAY FROM CHILDREN. This is NOT a toy!
2. Do NOT use if any parts are BROKEN
3. Always disconnect/turn off when cleaning .
4. Compressor is NOT waterproof. To prevent electric shock, do NOT wet

Worldwide Suppliers is NOT responsible for injuries due to mishandling.

SP



ATENCIÓN / ADVERTENCIA



1. MANTENER FUERA DEL ALCANCE DE LOS NIÑOS. ¡Esto NO es un juguete!
2. NO lo use si alguna pieza está ROTA.
3. Siempre desconecte/apague el aparato antes de limpiarlo.
4. El compresor NO es resistente al agua. Para evitar descargas eléctricas, NO lo moje.

Worldwide Suppliers NO se hace responsable de las lesiones causadas por un mal uso.

DE



ACHTUNG / WARNUNG



1. VON KINDERN FERNHALTEN. Dies ist KEIN Spielzeug!
2. Nicht verwenden, wenn Teile beschädigt sind.
3. Vor der Reinigung immer vom Stromnetz trennen/ausschalten.
4. Der Kompressor ist NICHT wasserdicht. Um einen Stromschlag zu vermeiden, nicht nass machen.

Worldwide Suppliers haftet NICHT für Verletzungen durch unsachgemäße Handhabung.

WARRANTY INFORMATION

12 MONTH LIMITED WARRANTY AGAINST DEFECTS OR LACK OF CRAFTSMANSHIP.

Our product carries warranty against defective material of workmanship for 1 full year from the date of purchase. Any product determined to be defective in material or workmanship during the warranty period will be repaired or replaced without the cost of parts or labor to consumer.

CUSTOMER SERVICE

Please reach out to our Customer Service team for any Questions or Concerns regarding your Airbrush Gun Kit. We are here to assist on all matters and take great pride in taking care of our customers.



Scan QR code to Submit a " Contact Me" Form

Call, Text OR Email: M-F 8 AM-3 PM PST
Email: support@supremetrimmer.com
Phone: +1 (818) 626-8065 (USA)
Website: WWW.SUPREMETRIMMER.COM